



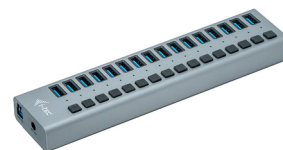
## i-tec U3CHARGEHUB16 mobiilseadme laadija Universaalne Hall Vahelduvvool Hoonesisene

**Brand :** i-tec

**Product code:** U3CHARGEHUB16

**Product name :** U3CHARGEHUB16

i-tec U3CHARGEHUB16. Laadija tüüp: Hoonesisene, Toiteallika tüüp: Vahelduvvool, Laadija ühilduvus: Universaalne. Sisendpinge: 100 - 240 V. Toote värv: Hall



Toimimine		Kaal ja mõõtmed	
Laadija ühilduvus *	Universaalne	Laius	226 mm
Toiteallika tüüp *	Vahelduvvool	Sügavus	53 mm
USB 3.2 Gen 1 (3.1 Gen 1) A-tüüpi portide hulk	16	Kõrgus	24 mm
Laadija tüüp *	Hoonesisene	Kaal	250 g
Disain		Pakendi andmed	
Toote värv *	Hall	Pakendi laius	246 mm
		Pakendi sügavus	122 mm
		Pakendi kõrgus	66 mm
Võimsus		Töötingimused	
Sisendpinge	100 - 240 V	Kasutamistemperatuur (T-T)	0 - 50 °C
Sisendsagedus	50/60 Hz		
Maksimaalne võimsus	90 W	Logistika andmed	
		Harmonized System (HS) kood	85044095



8595611702969

Disclaimer. The information published here (the "Information") is based on sources that can be considered reliable, typically the manufacturer, but this Information is provided "AS IS" and without guarantee of correctness or completeness. The Information is only indicative and can be changed at any time without notification. No rights can be based on the Information. Suppliers or aggregators of this Information do not accept any liability with regard to the content of (web)pages and other documents, including its Information. The publisher of the Information can not be held liable for the content of 3rd party websites that are linking this Information or are linked to from this Information. You as the User of the Information are solely responsible for the choice and usage of this Information. You are not entitled to transfer, copy or otherwise multiply or distribute the Information. You are obliged to follow the directions of the copyright owner(s) with regard to the use of the Information. Exclusively Dutch law is applicable. With regard to price and stock data on the site, the publisher followed a number of starting points, which are not necessarily relevant for your private or business circumstances. Therefore, the price and stock data are only indicative and are subject to changes. You are personally responsible for the way you use and apply this information. As a user of the Information or sites or documents in which this Information is included, you will adhere to standard fair use including avoidance of spamming, ripping, intellectual-property violations, privacy violations, and any other illegal activity.

Publication date: 14-AUG-2024. Prints or copies of Information are only valid on the printed Publication date