



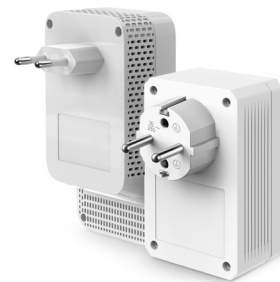
TP-Link TL-WPA7617 KIT elektriliinisidevõrgu võrguadapter 1200 Mbit/s Ethernet LAN WiFi Valge 2 tk

Brand : TP-Link

Product code: TL-WPA7617 KIT

Product name : TL-WPA7617 KIT

TP-Link TL-WPA7617 KIT. Andmete edastamise maksimaalne määr: 1200 Mbit/s, Võrgustandardid: IEEE 802.11a, IEEE 802.11ac, IEEE 802.11b, IEEE 802.11g, IEEE 802.11n, IEEE 802.3, IEEE 802.3ab,..., Elektripistik: Tüüp E/F. Võimsustarve (tüüpiline): 6,5 W. Toote värv: Valge, Antenni tüüp: Sisemodern, Sertifikaat: CE,RoHS. Toetatud Windowsi operatsioonisüsteemid: Windows 10, Windows 7, Windows 8, Windows 8.1, Windows Vista, Windows XP. Laius: 69,5 mm, Sügavus: 35 mm, Kõrgus: 124,1 mm



Performance		System requirements	
Maximum data transfer rate *	1200 Mbit/s	Windows operating systems supported	Windows 10, Windows 7, Windows 8, Windows 8.1, Windows Vista, Windows XP
Ethernet LAN *	✓	Linux operating systems supported	✓
Ethernet LAN interface type	Gigabit Ethernet	Mac compatibility	✓
Ethernet LAN data rates	10,100,1000 Mbit/s	Mac operating systems supported	✓
Ethernet LAN (RJ-45) ports	1	Operational conditions	
Wi-Fi *	✓	Operating temperature (T-T)	0 - 40 °C
Top Wi-Fi standard	Wi-Fi 5 (802.11ac)	Operating relative humidity (H-H)	10 - 90%
Wi-Fi standards	802.11a, 802.11b, 802.11g, Wi-Fi 4 (802.11n), Wi-Fi 5 (802.11ac)	Weight & dimensions	
Networking standards *	IEEE 802.11a, IEEE 802.11ac, IEEE 802.11b, IEEE 802.11g, IEEE 802.11n, IEEE 802.3, IEEE 802.3ab, IEEE 802.3u	Width	69.5 mm
	Type E / F	Depth	35 mm
Power plug *	✓	Height	124.1 mm
Built-in power socket *	✓	Certificates	
PowerLine standard	HomePlug AV2	Compliance certificates	CE, RoHS
Modulation	OFDM	Packaging data	
Security algorithms	128-bit AES, WEP, WPA-PSK, WPA2-PSK	Package width	230 mm
Maximum operating distance	300 m	Package depth	190 mm
Encryption button	✓	Package height	100 mm
Plug and Play	✓	Package weight	670 g
Power		Package type	Box
Power consumption (typical)	6.5 W	Packaging content	
Design		Quantity per pack *	2 pc(s)
Antenna type	Internal	Quick installation guide	✓
LED indicators	✓	Cables included	LAN (RJ-45)
Product colour *	White		

Design

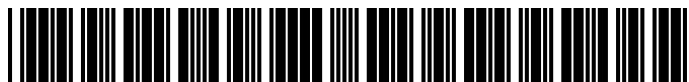
Certification	CE,RoHS
---------------	---------



6935364010935



0845973010102



845973010102

Disclaimer. The information published here (the "Information") is based on sources that can be considered reliable, typically the manufacturer, but this Information is provided "AS IS" and without guarantee of correctness or completeness. The Information is only indicative and can be changed at any time without notification. No rights can be based on the Information. Suppliers or aggregators of this Information do not accept any liability with regard to the content of (web)pages and other documents, including its Information. The publisher of the Information can not be held liable for the content of 3rd party websites that are linking this Information or are linked to from this Information. You as the User of the Information are solely responsible for the choice and usage of this Information. You are not entitled to transfer, copy or otherwise multiply or distribute the Information. You are obliged to follow the directions of the copyright owner(s) with regard to the use of the Information. Exclusively Dutch law is applicable. With regard to price and stock data on the site, the publisher followed a number of starting points, which are not necessarily relevant for your private or business circumstances. Therefore, the price and stock data are only indicative and are subject to changes. You are personally responsible for the way you use and apply this information. As a user of the Information or sites or documents in which this Information is included, you will adhere to standard fair use including avoidance of spamming, ripping, intellectual-property violations, privacy violations, and any other illegal activity.

Publication date: 02-JAN-2025. Prints or copies of Information are only valid on the printed Publication date