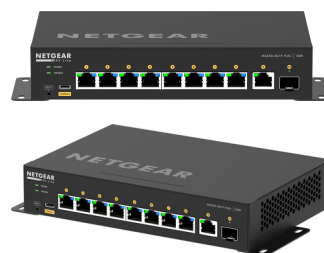


## NETGEAR GSM4210PD-100EUS võrgulüliti Juhitav L2/L3 Gigabit Ethernet (10/100/1000) Power over Ethernet tugi Must



**Brand :** NETGEAR

**Product code:** GSM4210PD-100EUS

**Product name :** GSM4210PD-100EUS

NETGEAR GSM4210PD-100EUS. Lüliti tüüp: Juhitav, Lüliti kiht: L2/L3. RJ-45 Etherneti ühenduse pesade tüüp: Gigabit Ethernet (10/100/1000), RJ-45 Etherneti ühenduse pesade arv: 8. Täisdupleks. MAC-aadresside tabel: 16000 sisestust, Lülitusvõime: 24 Gbit/s. Võrgustandardid: IEEE 802.1D, IEEE 802.1Q, IEEE 802.1ab, IEEE 802.1s, IEEE 802.1w, IEEE 802.1x, IEEE 802.3ad, IEEE 802.3af, IEEE 802.3at, IEEE 802.3bt, IEEE 802.3x. Power over Ethernet tugi. Püstikmontaaž

Juhtimisfunktsioonid		Toimimine	
Lüliti tüüp *	Juhitav	Sisesehitatud protsessor	✓
Lüliti kiht	L2/L3	Protsessori mudel	ARM Cortex-A9
Teenusekvaliteedi (QoS) tugi	✓	Protsessori sagedus	1250 MHz
Pesad & liidesed		Sisemälu	2048 MB
RJ-45 Etherneti ühenduse pesade arv *	8	Müratase	30,06 dB
RJ-45 Etherneti ühenduse pesade tüüp *	Gigabit Ethernet (10/100/1000)	Võimsus	
Võrgustumine		Toiteallikas *	AC/DC
Võrgustandardid *	IEEE 802.1D, IEEE 802.1Q, IEEE 802.1ab, IEEE 802.1s, IEEE 802.1w, IEEE 802.1x, IEEE 802.3ad, IEEE 802.3af, IEEE 802.3at, IEEE 802.3bt, IEEE 802.3x	Kaasas toiteplokk *	✓
		AC-sisendpinge	220 - 240 V
Täisdupleks	✓	AC-sisendsagedus	50 - 60 Hz
Linkide koondamine	✓	Internet elektrivõrgu kaudu (PoE)	
Levindamise tormi kontroll	✓	Power over Ethernet tugi *	✓
Kiiruse piiramine	✓	Toide üle võrgu (PoE) pesade arv	8
Genereeriva puu protokoll	✓	Toide üle võrgu (PoE) võimsus pordi kohta	30 W
Andmeedastus		Toide üle võrgu (PoE) võimsusühikuid kokku	110 W
Lülitusvõime *	24 Gbit/s	Töötingimused	
MAC-aadresside tabel *	16000 sisestust	Kasutamistemperatuur (T-T)	0 - 50 °C
Ladusta-ja-edasta	✓	Hoiustamistemperatuur (T-T)	-20 - 70 °C
Turvalisus		Suhteline õhuniiskus kasutamisel (H-H)	0 - 90 protsenti
DHCP elemendid	DHCP Option 82, DHCP relay, DHCP server, DHCP snooping, DHCPv6 client, DHCPv6 relay, DHCPv6 server, DHCPv6 snooping	Suhteline õhuniiskus (H-H) hoiustamisel	0 - 95 protsenti
		Kasutamiskõrgus	0 - 3000 m
Pääsuloend (ACL)	✓	Kõrgus mittekasutamisel	0 - 3000 m
IGMP-jälgimine	✓	Soojuse hajumine	559,555 BTU/h
SSH/SSL tugi	✓	Kaal ja mõõtmed	
Tsükli kaitse	✓	Laius	210 mm
BPDU filtreerimine/kaitse	✓	Sügavus	140 mm
Autentimine	MAC-põhine autentimine	Kõrgus	40 mm
Autentimise tüüp	RADIUS	Kaal	967 g
Multisaate tunnused		Pakendi andmed	
Multiedastuse tugi	✓	Kasutusjuhend	✓
IPv4 multiedastuse sissekanded	2000	Juhend	✓
Disain			
Püstikmontaaž *	✓		
Toote värv	Must		
LED-indikaatorid	Internet elektrivõrgu kaudu (PoE), Võimsus, Staatus		



0606449160192



606449160192

Disclaimer. The information published here (the "Information") is based on sources that can be considered reliable, typically the manufacturer, but this Information is provided "AS IS" and without guarantee of correctness or completeness. The Information is only indicative and can be changed at any time without notification. No rights can be based on the Information. Suppliers or aggregators of this Information do not accept any liability with regard to the content of (web)pages and other documents, including its Information. The publisher of the Information can not be held liable for the content of 3rd party websites that are linking this Information or are linked to from this Information. You as the User of the Information are solely responsible for the choice and usage of this Information. You are not entitled to transfer, copy or otherwise multiply or distribute the Information. You are obliged to follow the directions of the copyright owner(s) with regard to the use of the Information. Exclusively Dutch law is applicable. With regard to price and stock data on the site, the publisher followed a number of starting points, which are not necessarily relevant for your private or business circumstances. Therefore, the price and stock data are only indicative and are subject to changes. You are personally responsible for the way you use and apply this information. As a user of the Information or sites or documents in which this Information is included, you will adhere to standard fair use including avoidance of spamming, ripping, intellectual-property violations, privacy violations, and any other illegal activity.

Publication date: 13-AUG-2024. Prints or copies of Information are only valid on the printed Publication date