

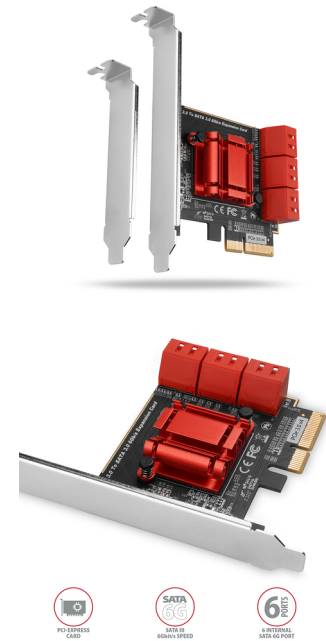
## Axagon PCES-SA6 liidesekaart/adapter Sisemine SATA

**Brand :** Axagon

**Product code:** PCES-SA6

**Product name :** PCES-SA6

Axagon PCES-SA6. Hostiliides: PCIe, Väljundliides: SATA, Hostiliidese sugu: Sisestatav konnektor. Toote värv: Punane, Hõbe, Otstarve: PC, Jahutuse tüüp: Passiivne. Kiibikomplekt: ASMedia ASM1166, Andmeedastuskiirus (max): 6 Gbit/s. Toetatud Windowsi operatsioonisüsteemid: Windows 10, Windows 11, Windows 7, Windows 8, Windows 8.1, Toetatud serverioperatsioonisüsteemid: Windows Server 2008, Windows Server 2012, Windows Server 2016, Windows Server 2019. Laius: 145 mm, Sügavus: 112 mm, Kõrgus: 25 mm



Ports & interfaces		Features	
Host interface *	PCIe	Plug and Play	✓
Host interface gender	Male	<b>System requirements</b>	
Output interface *	SATA	Windows operating systems supported	Windows 10, Windows 11, Windows 7, Windows 8, Windows 8.1
Expansion card form factor	Full-height / Low-profile	Linux operating systems supported	✓
Expansion card standard	PCIe 3.0	Server operating systems supported	Windows Server 2008, Windows Server 2012, Windows Server 2016, Windows Server 2019
NVMe	✗	<b>Technical details</b>	
SATA revision	3.0	Compliance certificates	RoHS
Internal SATA ports quantity	6	<b>Weight &amp; dimensions</b>	
Port multiplier	✓	Width	145 mm
<b>Design</b>		Depth	112 mm
Internal *	✓	Height	25 mm
Product colour	Red, Silver	Weight	94 g
Purpose	PC	<b>Packaging data</b>	
Cooling type	Passive	Quantity per pack	1 pc(s)
Hot-Plug support	✓	Manual	✓
Easy to install	✓	Package width	145 mm
Country of origin	China	Package depth	112 mm
Certification	CE	Package height	25 mm
<b>Features</b>		Package weight	94 g
Chipset	ASMedia ASM1166	Package type	Box
Data transfer rate (max)	6 Gbit/s		
TRIM support	✓		
Native Command Queuing (NCQ)	✓		



8595247906465

Disclaimer. The information published here (the "Information") is based on sources that can be considered reliable, typically the manufacturer, but this Information is provided "AS IS" and without guarantee of correctness or completeness. The Information is only indicative and can be changed at any time without notification. No rights can be based on the Information. Suppliers or aggregators of this Information do not accept any liability with regard to the content of (web)pages and other documents, including its Information. The publisher of the Information can not be held liable for the content of 3rd party websites that are linking this Information or are linked to from this Information. You as the User of the Information are solely responsible for the choice and usage of this Information. You are not entitled to transfer, copy or otherwise multiply or distribute the Information. You are obliged to follow the directions of the copyright owner(s) with regard to the use of the Information. Exclusively Dutch law is applicable. With regard to price and stock data on the site, the publisher followed a number of starting points, which are not necessarily relevant for your private or business circumstances. Therefore, the price and stock data are only indicative and are subject to changes. You are personally responsible for the way you use and apply this information. As a user of the Information or sites or documents in which this Information is included, you will adhere to standard fair use including avoidance of spamming, ripping, intellectual-property violations, privacy violations, and any other illegal activity.

Publication date: 10-FEB-2025. Prints or copies of Information are only valid on the printed Publication date