

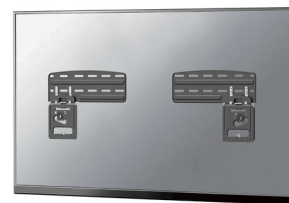
Neomounts WL30-265BL1 telerikinnitus 2,16 m (85") Must

Brand : Neomounts

Product code: WL30-265BL1

Product name : WL30-265BL1

Neomounts WL30-265BL1. Maksimaalne kaal (mahutavus): 60 kg, Ekraani minimaalne suurus: 109,2 cm (43"), Ekraani maksimaalne suurus: 2,16 m (85"), Paigaldussüsteemi ühilduvus (min): 150 x 100 mm, Paigaldussüsteemi ühilduvus (max): 1200 x 800 mm. Kaugus seinast (maksimaalne): 7,5 cm. Toote värv: Must



Mounting		Features		
Maximum weight capacity *	60 kg	Compatible products	- 43-85": Crystal UHD Signage Displays QMC, QBC, QHC 2023 Samsung - 43-65": OLED S90C, S95C, Neo QLED QN900C, QN800C, QN90C QN85C, QLED Q70C, Q60C, Crystal UHD CU8000 - 50-85": The Frame (2021-2023) 2022 Samsung - 43-85": OLED S90BD, S90BQN95B, Neo QLED QN90BD, QN90B, QN900B, QN85BD, QN85B, QN850B, QN800B, QLED Q60B 2021 Samsung - 43-85": Neo QLED, QLED (excluding Q80A), Crystal UHD (AU8000 - AU9000)	
Minimum screen size	109.2 cm (43")			
Number of displays supported *	1			
Maximum screen size *	2.16 m (85")			
Minimum VESA mount *	150 x 100 mm			
Maximum VESA mount *	1200 x 800 mm			
Panel mounting interface	200 x 200,200 x 400,400 x 400,400 x 600,200 x 300,300 x 300,440 x 400,500 x 400,600 x 200,600 x 300,600 x 400,680 x 300,800 x 200,800 x 400,300 x 200,400 x 300,400 x 500,600 x 500,600 x 600,800 x 500,800 x 600,900 x 600,200 x 100,300 x 100,1000 x 400,1000 x 600,460 x 640,800 x 800,300 x 900,1000 x 700,350 x 350,1200 x 600,400 x 200,1000 x 800,1200 x 800,1200 x 900,1400 x 800,1500 x 900,1500 x 600,1600 x 600,700 x 400,500 x 500,150 x 200,800 x 450,200 x 150			
	Weight & dimensions			
	Width			640 mm
	Depth (max)			7.5 cm
	Height	236 mm		
	Weight	1.2 kg		
	Packaging data			
	Package width	162 mm		
	Package depth	63 mm		
	Package height	363 mm		
Package weight	1.6 kg			
Mounting type *	Wall	Logistics data		
Ergonomics		Master (outer) case width	350 mm	
Type	Fixed	Master (outer) case length	345 mm	
Distance to the wall (max)	7.5 cm	Master (outer) case height	380 mm	
Design		Master (outer) case gross weight	16.5 kg	
Product colour *	Black	Master (outer) case net weight	12 kg	
Housing material	Steel	Products per master (outer) case	10 pc(s)	
Technical details		Harmonized System (HS) code	HS7326909890	
Warranty period	5 year(s)	Products per pallet (EU)	243 pc(s)	



8717371443900

Disclaimer. The information published here (the "Information") is based on sources that can be considered reliable, typically the manufacturer, but this Information is provided "AS IS" and without guarantee of correctness or completeness. The Information is only indicative and can be changed at any time without notification. No rights can be based on the Information. Suppliers or aggregators of this Information do not accept any liability with regard to the content of (web)pages and other documents, including its Information. The publisher of the Information can not be held liable for the content of 3rd party websites that are linking this Information or are linked to from this Information. You as the User of the Information are solely responsible for the choice and usage of this Information. You are not entitled to transfer, copy or otherwise multiply or distribute the Information. You are obliged to follow the directions of the copyright owner(s) with regard to the use of the Information. Exclusively Dutch law is applicable. With regard to price and stock data on the site, the publisher followed a number of starting points, which are not necessarily relevant for your private or business circumstances. Therefore, the price and stock data are only indicative and are subject to changes. You are personally responsible for the way you use and apply this information. As a user of the Information or sites or documents in which this Information is included, you will adhere to standard fair use including avoidance of spamming, ripping, intellectual-property violations, privacy violations, and any other illegal activity.

Publication date: 05-APR-2025. Prints or copies of Information are only valid on the printed Publication date